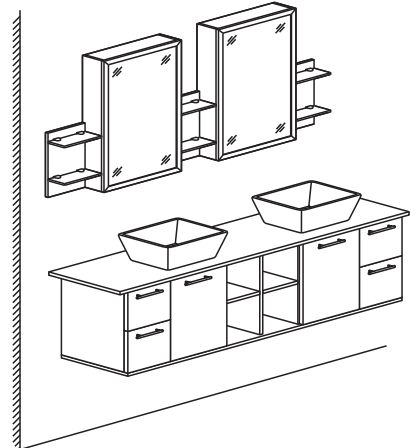


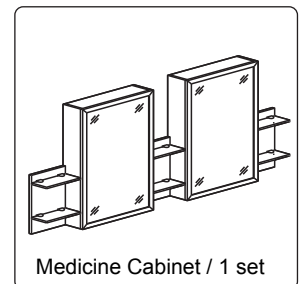
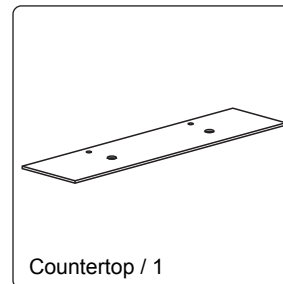
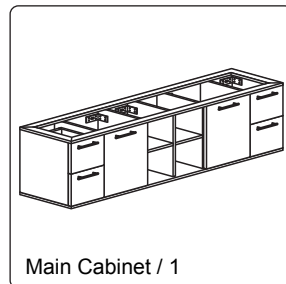
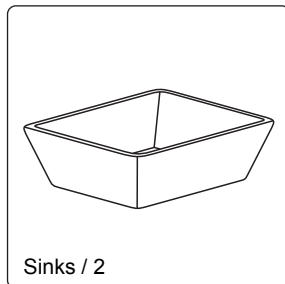
# WYNDHAM COLLECTION

- Prior to installation please check received items against the “Packing List”. Please report any missing items to your retailer immediately.
- Protect all surfaces from sharp objects, high heat sources, direct prolonged sunlight and chemical hazards. Put soft material like a blanket on the ground to avoid scratching the cabinets or floor.
- Professional installation recommended.

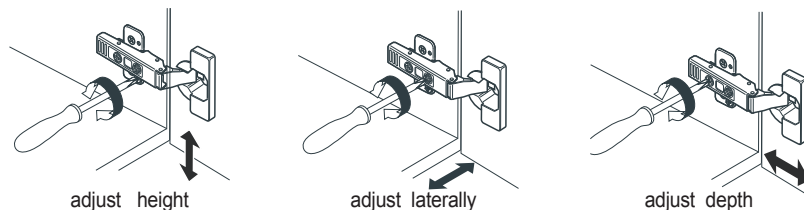


## PACKING LIST

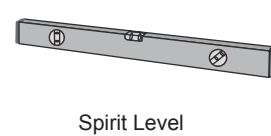
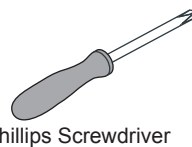
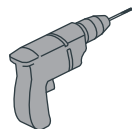
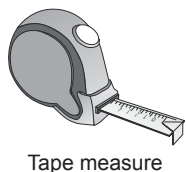
(Not all components may be included, depending upon your purchase)



## HOW TO ADJUST HINGES



## REQUIRED TOOLS NOT IN BOX

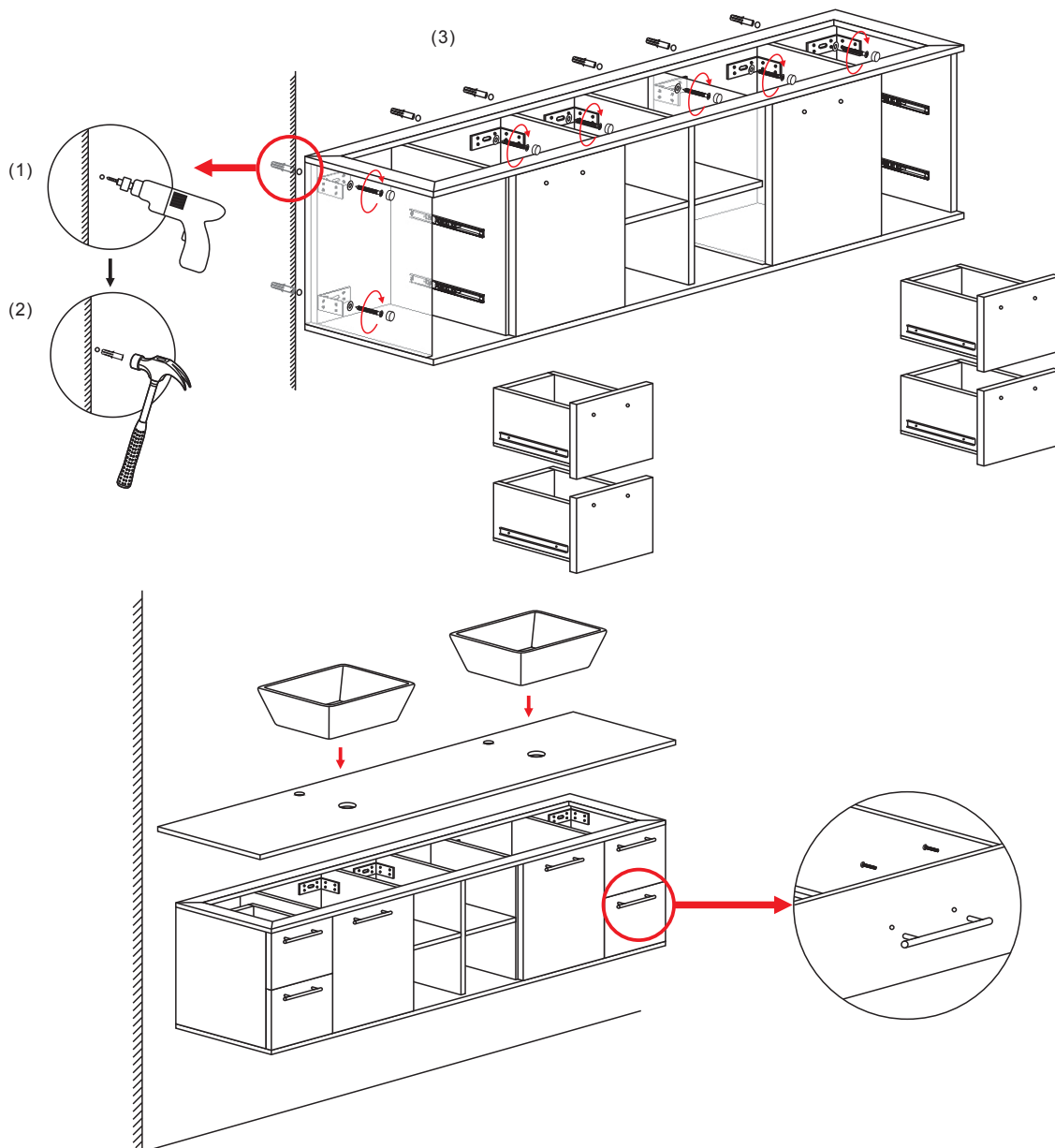


WC-WHE007-SH-72  
Installation Guide

# WYNDHAM COLLECTION

## CABINET ASSEMBLY

- 1) Mark the 8 hole positions on the wall with pencil, refer to the drawing below. Drill the holes. Using stud bolts, drill through the cabinets into studs. Stud bolts are not included.
- 2) Carefully place the counter on the cabinet and then install the sinks.
- 3) Unscrew handles inside and reattach outside.



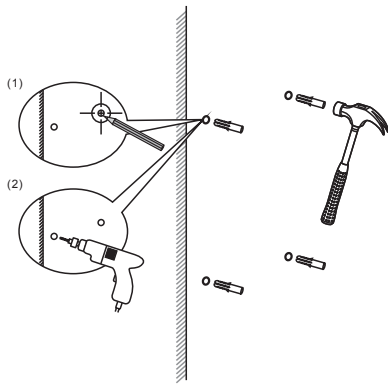
WC-WHE007-SH-72  
Installation Guide

# WYNDHAM COLLECTION

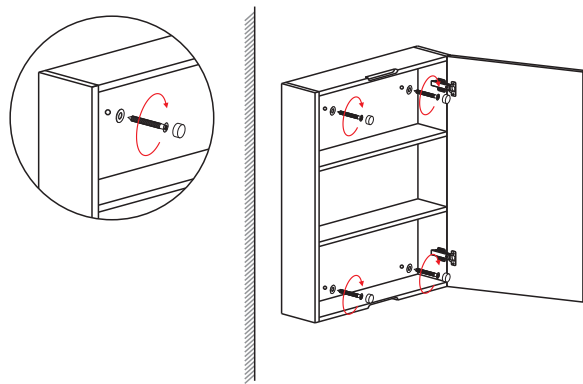
## MIRROR CABINET ASSEMBLY

- 1) Mark the screw hole positions on the wall with pencil, refer to the drawing below. Drill the holes and screw in the expanding screws.
- 2) Screw the cabinet in through the holes. Cover the screws using the screw covers.
- 3-1) Screw the brackets into the holes on the shelf backings.
- 3-2) Put the glass shelves into the brackets.
- 3-3) Tighten the screws.
- 3-4) Wipe clean.

1

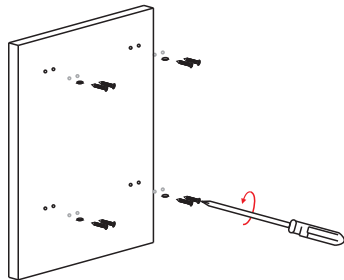


2

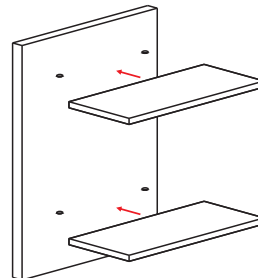


3

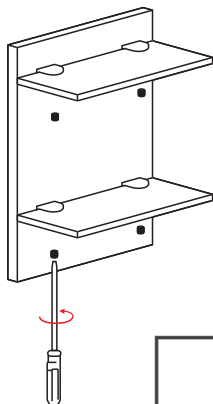
3-1)



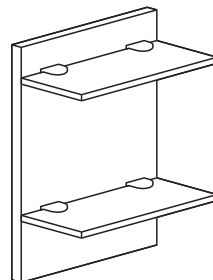
3-2)



3-3)



3-4)

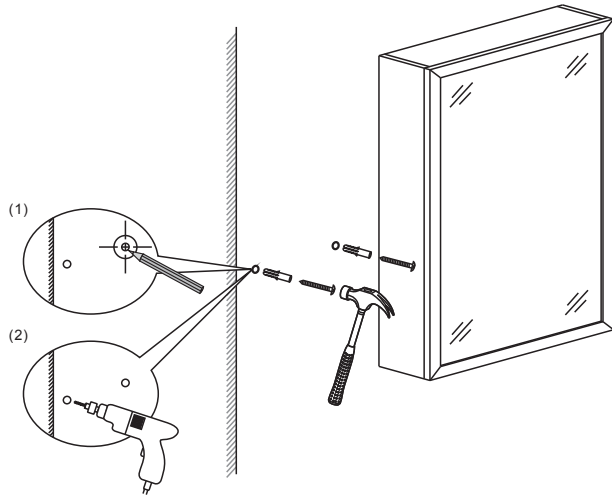


WC-WHE007-SH-72  
Installation Guide

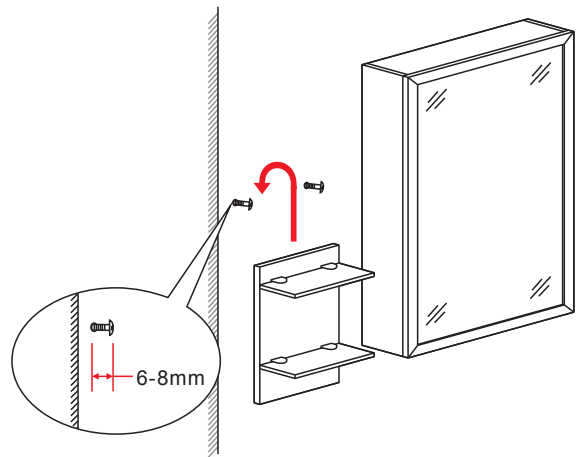
# WYNDHAM COLLECTION

- 4) Mark the screw hole positions on the wall with pencil, refer to the drawing below. Drill the holes and tap in expanding screws and then screws, leaving about 1/4" of the screw stem out.
- 5) Hang the shelf to the screw stem, refer to the drawing below.
- 6) Wipe clean.

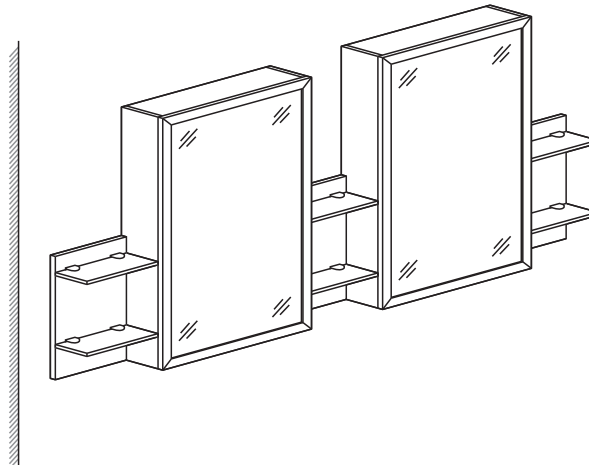
4



5



6



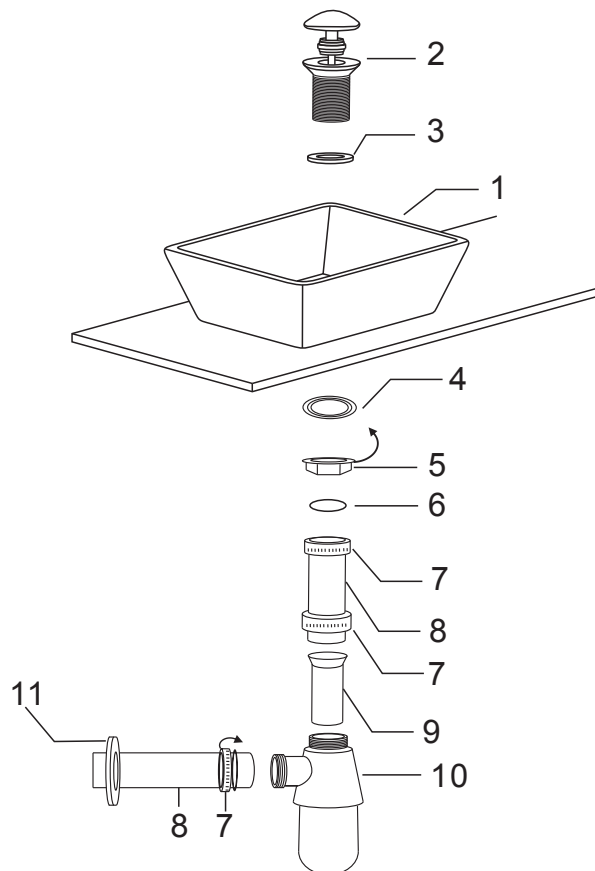
WC-WHE007-SH-72  
Installation Guide

# WYNDHAM COLLECTION

## DRAIN ASSEMBLY

- ◆ Connect trap to drain assembly as shown below, hand tighten and check for alignment. It may be necessary to cut off part of the vertical or the horizontal leg in order to make everything fit properly with existing plumbing.
- ◆ Install P-trap ensuring all the gaskets are in place and tighten.

- 1 Basin
- 2 Pop-up
- 3 Top gasket
- 4 Bottom lip gasket
- 5 Gasket
- 6 Washer
- 7 Bottom gasket
- 8 Drain nut
- 9 Rubber pipe
- 10 Tail piece
- 11 Drain lid



Drawings are not to scale

WC-WHE007-SH-72  
Installation Guide