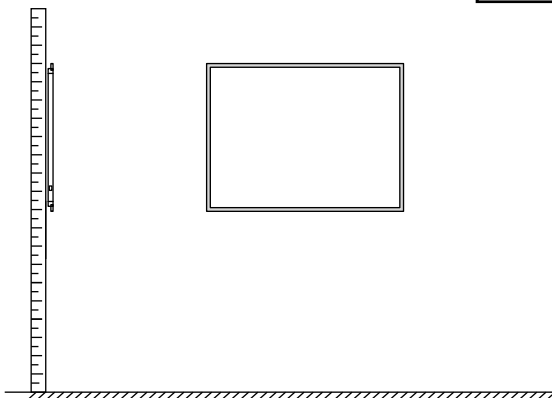
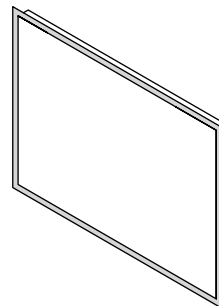


# WYNDHAM COLLECTION



- Prior to installation please check received items against the "Packing List". Please report any missing items to your retailer immediately.
- Protect all surfaces from sharp objects, high heat sources, direct prolonged sunlight and chemical hazards.
- Professional installation recommended.



## BEFORE YOU BEGIN INSTALLATION

Please review the instructions below carefully before starting the installation process. Keep this guide in a safe place for future reference.

- Hire a licensed electrician for all electrical wiring and installation procedures.
- Disconnect all power at the main circuit breaker before installation.
- Inspect the package contents prior to installation and before discarding any packaging.
- This mirror must be hardwired to a dimmable wall switch to use the built-in dimming feature.
- The mechanical switch located on the bottom of the mirror must remain ON when using the wall switch to operate the mirror.
- Note: The defogging feature will automatically disable when the mirror is dimmed.

## IMPORTANT SAFETY INSTRUCTIONS

To reduce the risk of electric shock, injury, or fire, please follow these safety guidelines:

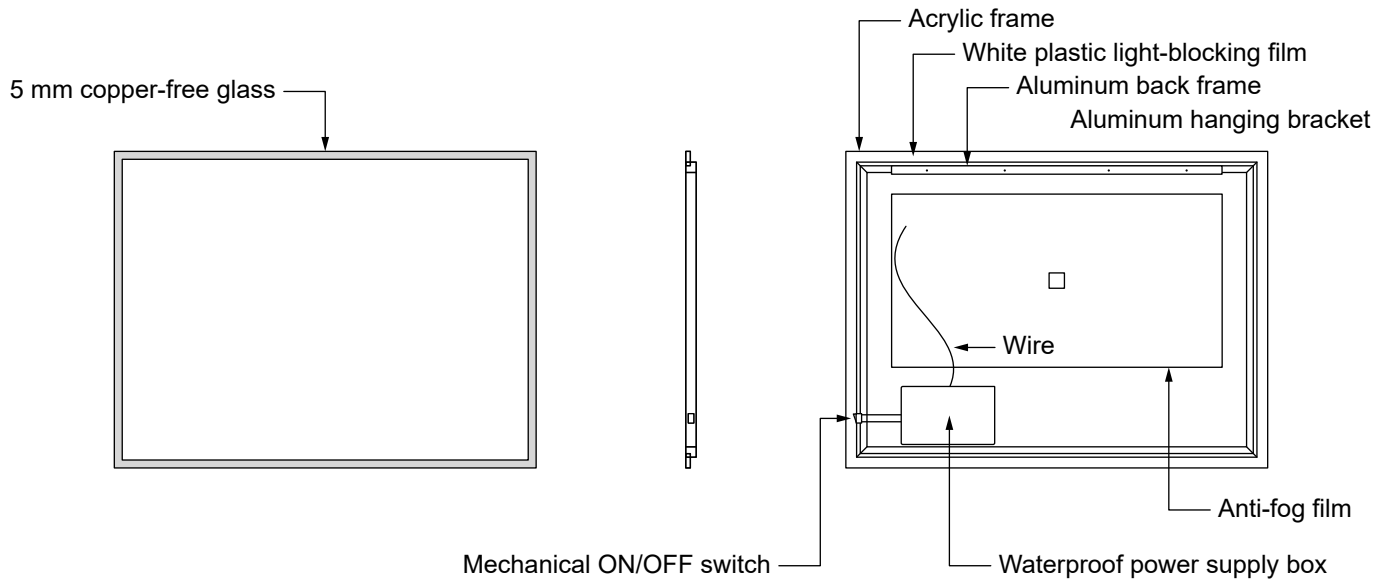
**DANGER - Electrical safety:**

- Disconnect power at the circuit breaker before servicing the mirror.
- Do not allow children, elderly individuals, or those with limited mobility to use the mirror without supervision.
- Use this product only as described in this guide.
- Do not use the mirror if the wiring appears damaged, the product malfunctions during testing, or if it has been dropped or exposed to moisture.
- Keep all cords away from hot surfaces and avoid placing the mirror near heat sources.
- Never insert foreign objects into any openings in the electrical components.
- This mirror is intended for indoor use only.
- To fully disconnect the unit, turn off the wall switch and cut power at the breaker.

**⚠ WARNING: Risk of Electric Shock - This product must be connected to a properly grounded outlet.**

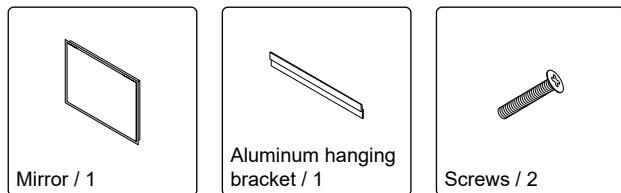
WC-LEDWSDPL4836  
Installation Guide

# WYNDHAM COLLECTION

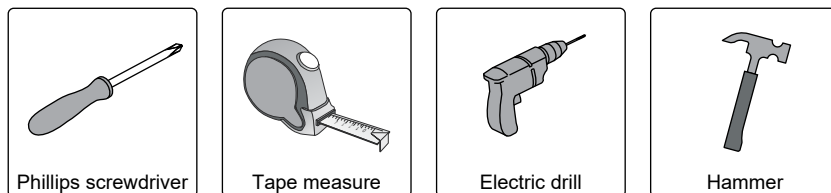


## PACKING LIST

(Not all components may be included, depending on your purchase)



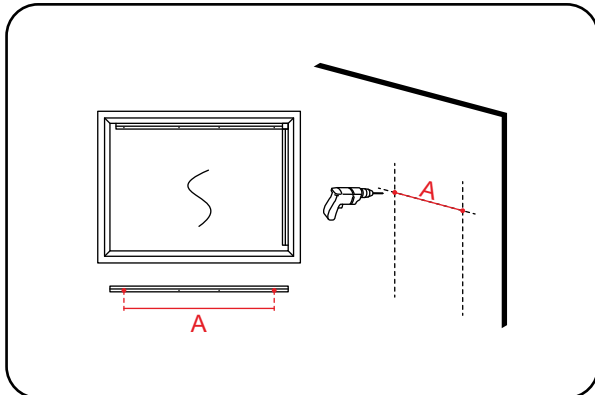
## REQUIRED TOOLS NOT IN BOX



WC-LEDWSDPL4836  
Installation Guide

# WYNDHAM COLLECTION

## INSTALLATION INSTRUCTIONS



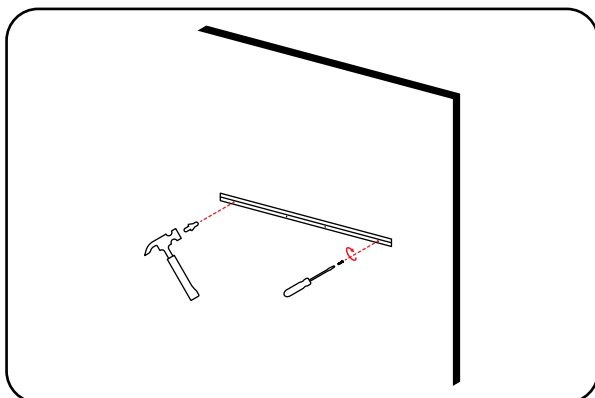
### ① Select Mounting Location

Choose a suitable location for the mirror, ensuring the main electrical supply is accessible and within reach of the mirror's electrical entry point.

The mounting bracket must be secured to a wall stud for proper support.

Measure distance "A" (as indicated in the diagram), and mark the positions for drilling.

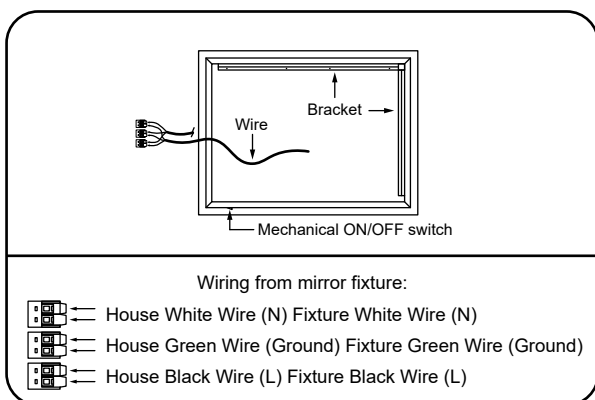
Drill holes at the marked points using an appropriate tool.



### ② Step 2: Install Wall Plugs & Mounting Bracket

Insert the supplied wall plugs into the drilled holes.

Fasten the mounting bracket securely to the wall using the provided screws.



Wiring from mirror fixture:

- House White Wire (N) Fixture White Wire (N)
- House Green Wire (Ground) Fixture Green Wire (Ground)
- House Black Wire (L) Fixture Black Wire (L)

### ③ Step 3: Electrical Wiring

**⚠ Important: Ensure power is turned off at the circuit breaker before beginning any electrical work.**

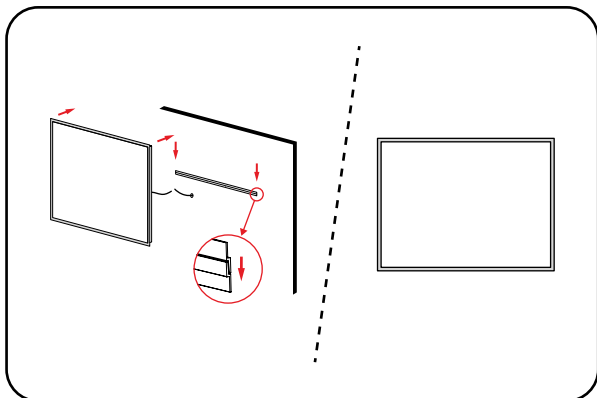
A junction box must be present inside the wall at the connection point.

Connect the mirror's fixture wires to the house wiring as indicated in the diagram.

Input Voltage: 110V

## WC-LEDWSDPL4836 Installation Guide

# WYNDHAM COLLECTION



#### ④ Step 4: Final Assembly

Carefully hang the mirror on the mounted bracket.

Peel off the protective film from the mirror surface.

Clean the mirror using a soft, dry, non-abrasive cloth.

Restore power at the breaker and operate the mirror via the wall switch.

WC-LEDWSDPL4836  
Installation Guide