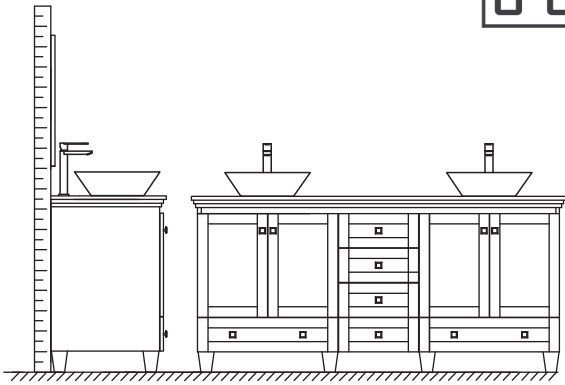
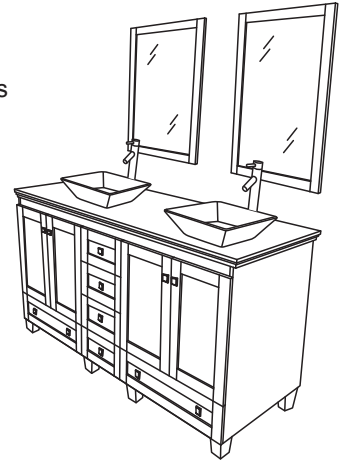


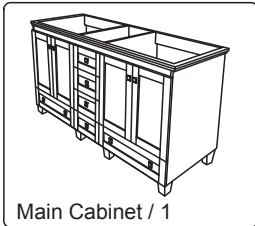
WYNDHAM COLLECTION



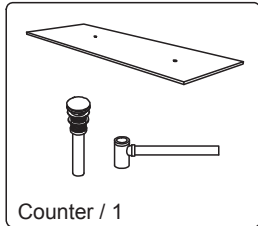
- Prior to installation, please check received items against the "Packing List".
- Please report any missing items to your retailer immediately
- Protect all surfaces from sharp objects, high heat sources, direct prolonged sunlight and chemical hazards.
- Professional installation recommended.



PACKING LIST

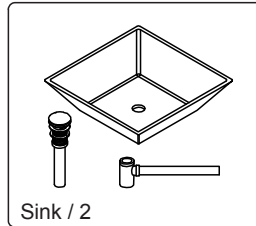


Main Cabinet / 1



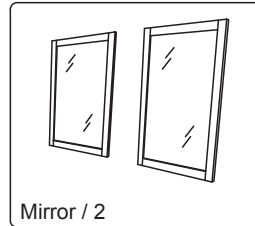
Counter / 1

OPTIONAL



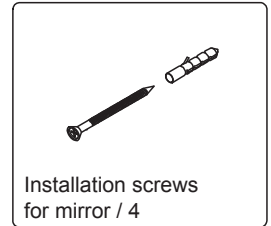
Sink / 2

OPTIONAL



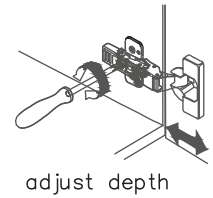
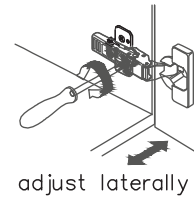
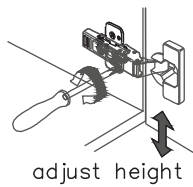
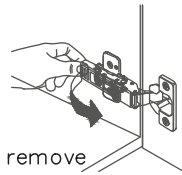
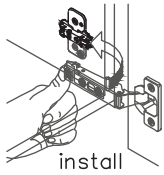
Mirror / 2

OPTIONAL

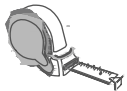


Installation screws
for mirror / 4

INSTALLATION AND ADJUSTMENT OF HINGES



REQUIRED TOOLS NOT IN BOX



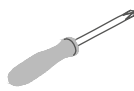
Tape measure



Pencil



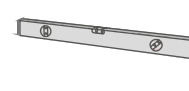
Electric Drill



Phillips Screwdriver



Adjustable Wrench



Spirit Level

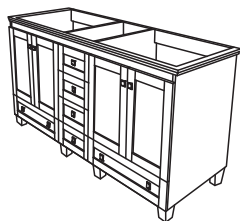


Silicone sealant

WC-CG8000-80
OVERMOUNT INSTALLATION

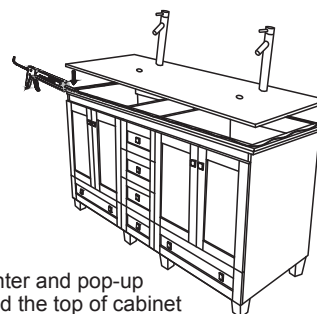
WYNDHAM COLLECTION

INSTALLATION INSTRUCTIONS

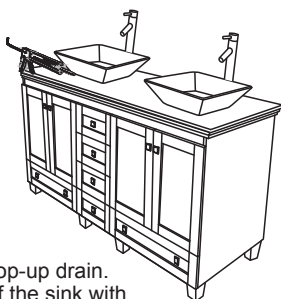


Cut hole in
back of cabinet

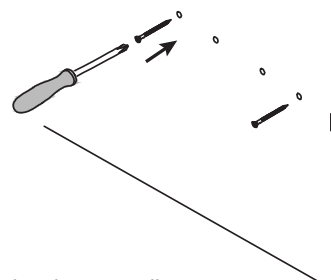
① Installer must cut appropriately sized hole in back of cabinet to accommodate existing placement of hot&cold wall valves and drains



② Install the counter and pop-up drain. Seal around the top of cabinet with clear or white silicone sealant.



③ Install the sink and pop-up drain. Seal around the base of the sink with clear or white silicone sealant.



④ Attach mirror brackets to wall with supplied screws. Hang mirrors.

WC-CG8000-80
OVERMOUNT INSTALLATION