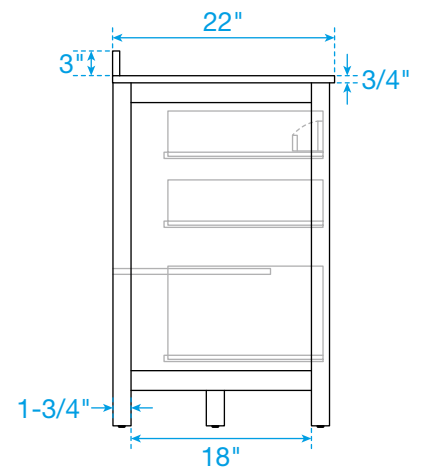
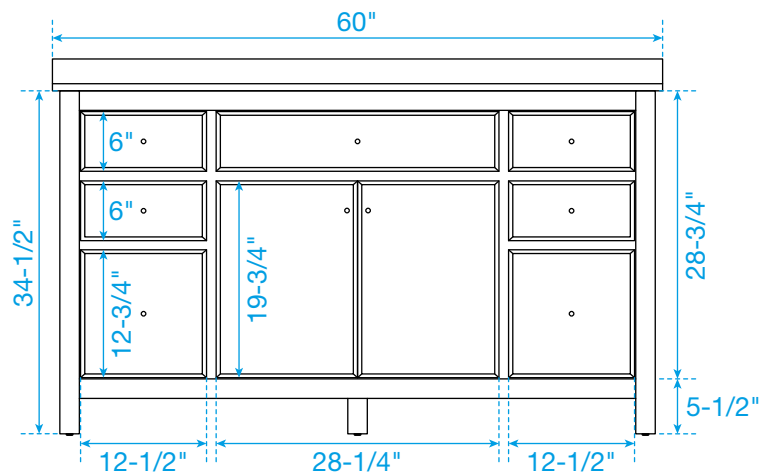
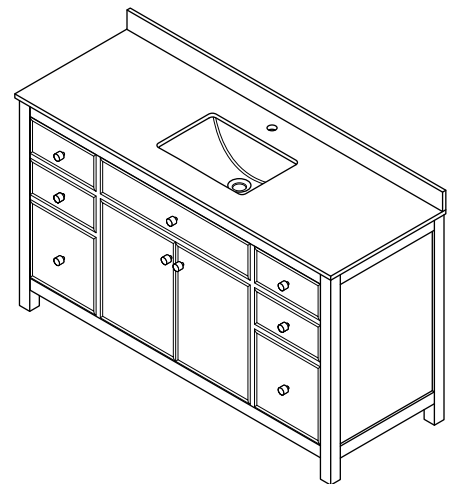


Technical drawing of a rectangular plate with a central hole. The plate has a total width of 60" and a total height of 22". The central hole has a diameter of $\varnothing 1\frac{3}{8}"$. The hole is positioned 30" from the left edge and 5 $\frac{3}{4}$ " from the top edge. The distance from the hole to the right edge is 30". The distance from the hole to the bottom edge is 11 $\frac{3}{4}$ ". The distance from the hole to the top edge is 2 $\frac{3}{4}$ ". The distance from the hole to the bottom edge is 18".



WC-9292-60-SGL
Quartz