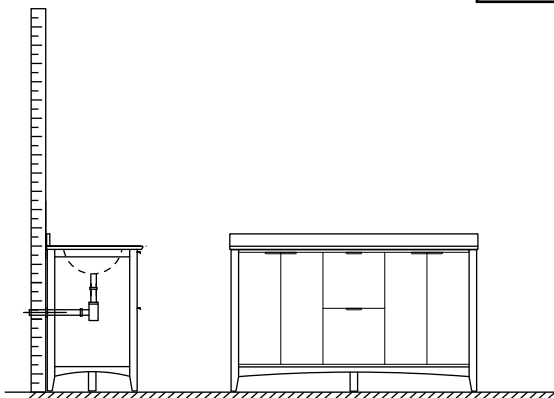
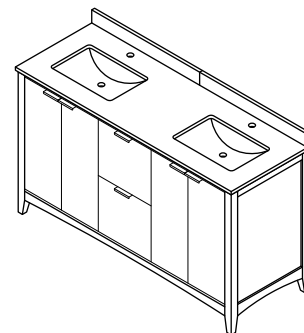


# WYNDHAM COLLECTION

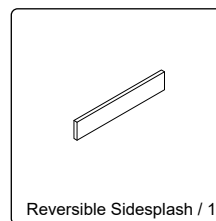
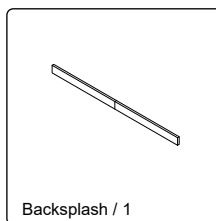
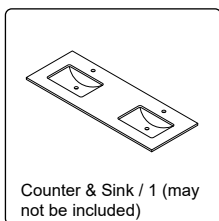
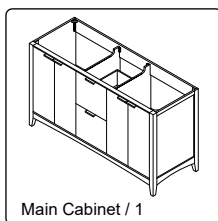


- Prior to installation please check received items against the "Packing List". Please report any missing items to your retailer immediately.
- Protect all surfaces from sharp objects, high heat sources, direct prolonged sunlight and chemical hazards.
- Professional installation recommended.
- Backsplash comes in two pieces.
- **Please install on a level surface. If minor door alignment is required, please follow the directions below.**

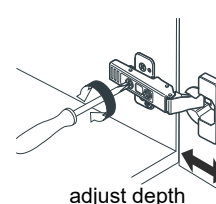
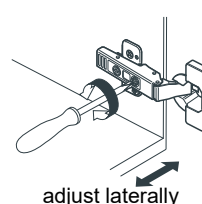
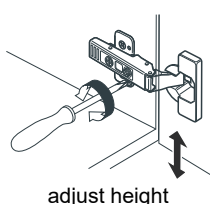
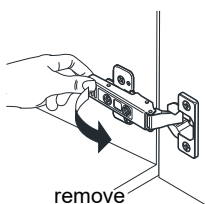
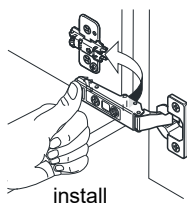


## PACKING LIST

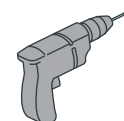
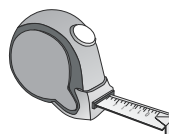
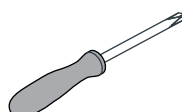
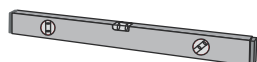
(Not all components may be included, depending upon your purchase)



## HOW TO ADJUST HINGES (if required)



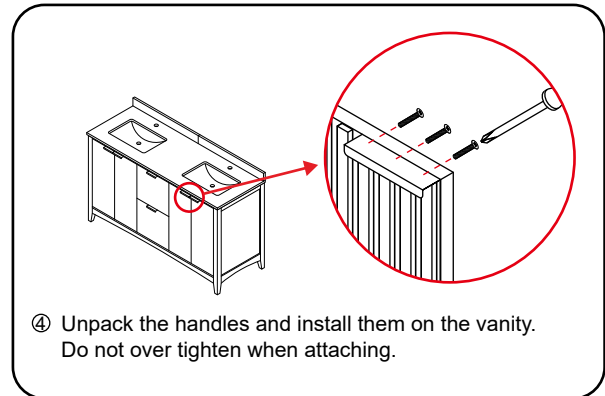
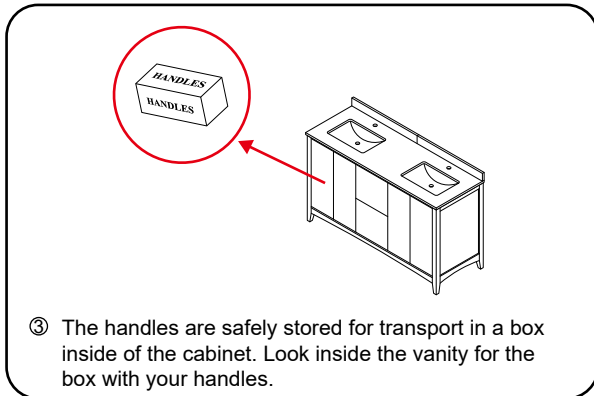
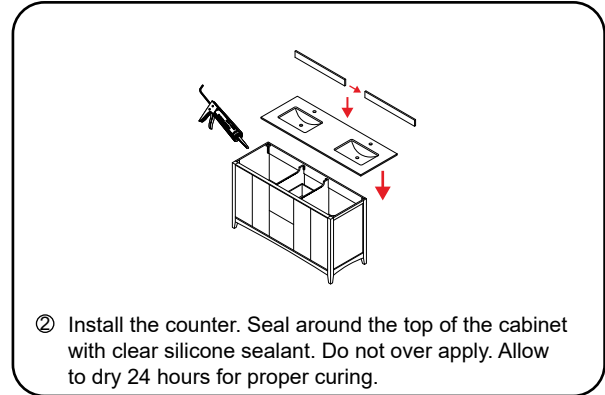
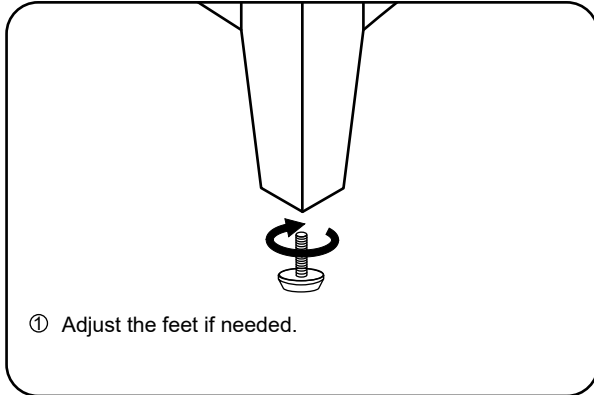
## REQUIRED TOOLS NOT IN BOX



WC-9191-60-DBL  
Installation Guide

# WYNDHAM COLLECTION

## INSTALLATION INSTRUCTIONS



WC-9191-60-DBL  
Installation Guide