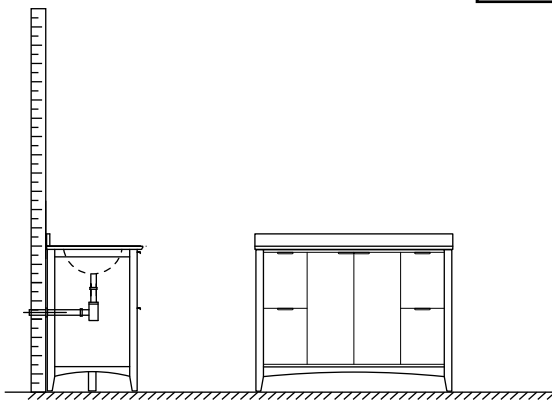


WYNDHAM COLLECTION



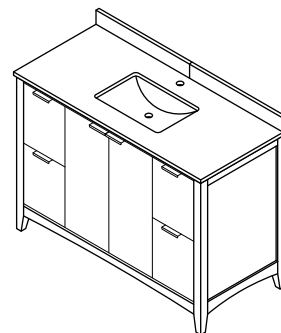
- Prior to installation please check received items against the "Packing List". Please report any missing items to your retailer immediately.

- Protect all surfaces from sharp objects, high heat sources, direct prolonged sunlight and chemical hazards.

- Professional installation recommended.

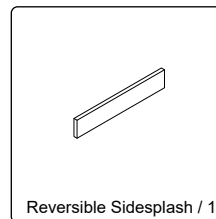
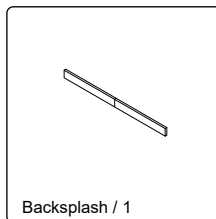
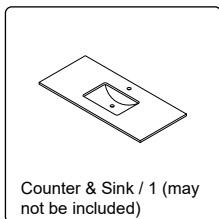
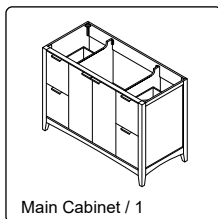
- Backsplash comes in two pieces.

- **Please install on a level surface. If minor door alignment is required, please follow the directions below.**

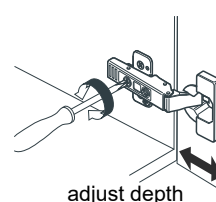
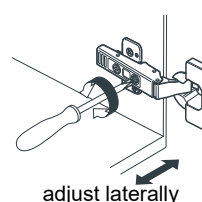
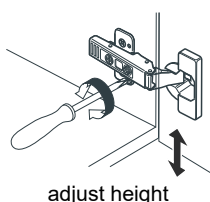
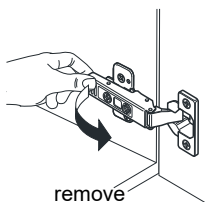
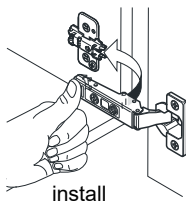


PACKING LIST

(Not all components may be included, depending upon your purchase)



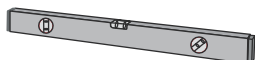
HOW TO ADJUST HINGES (if required)



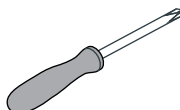
REQUIRED TOOLS NOT IN BOX



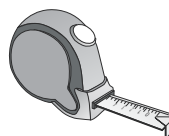
Silicone sealant



Spirit Level



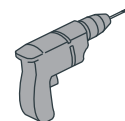
Phillips Screwdriver



Tape measure



Pencil

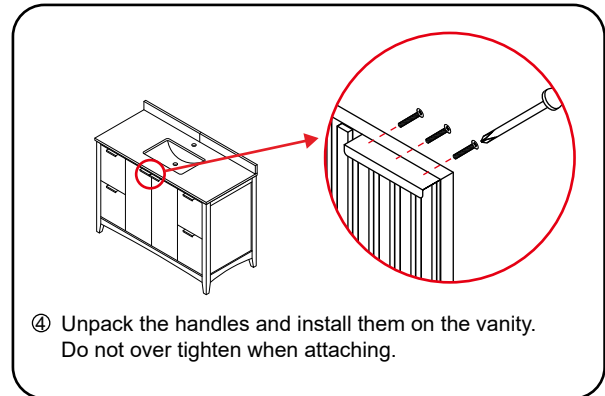
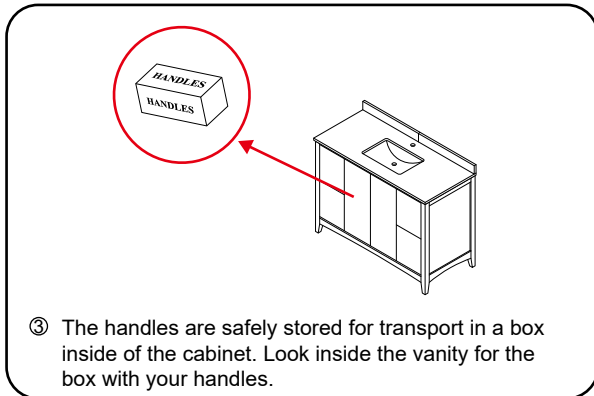
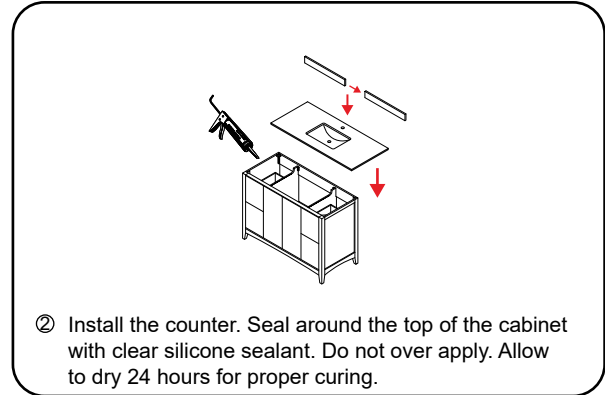
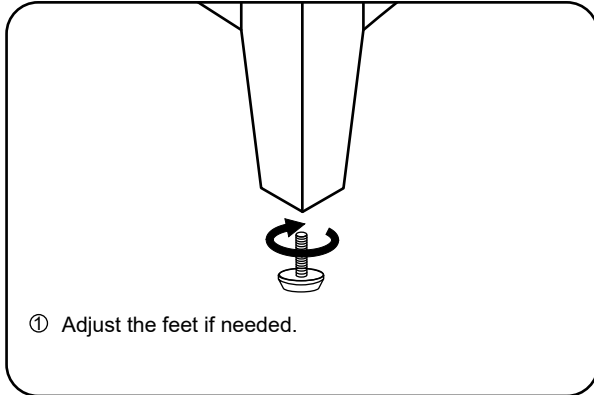


Electric Drill

WC-9191-48-SGL Installation Guide

WYNDHAM COLLECTION

INSTALLATION INSTRUCTIONS



WC-9191-48-SGL
Installation Guide