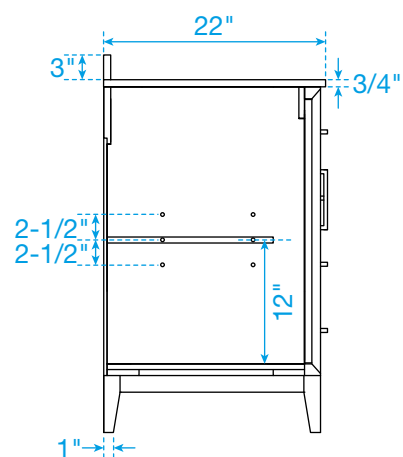
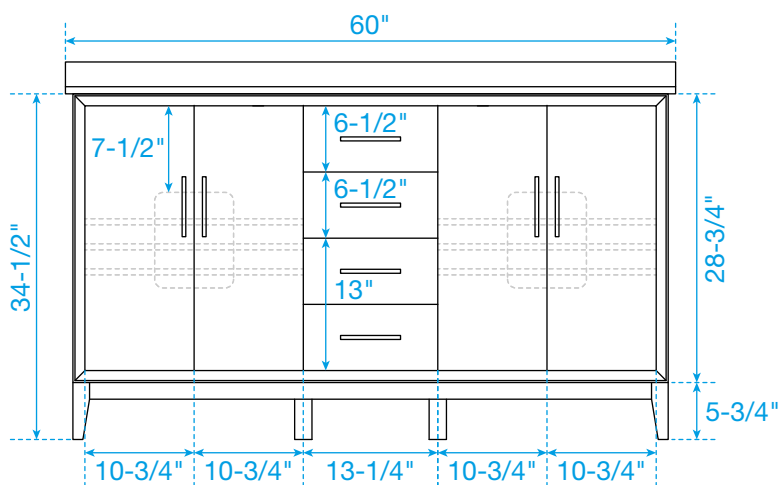
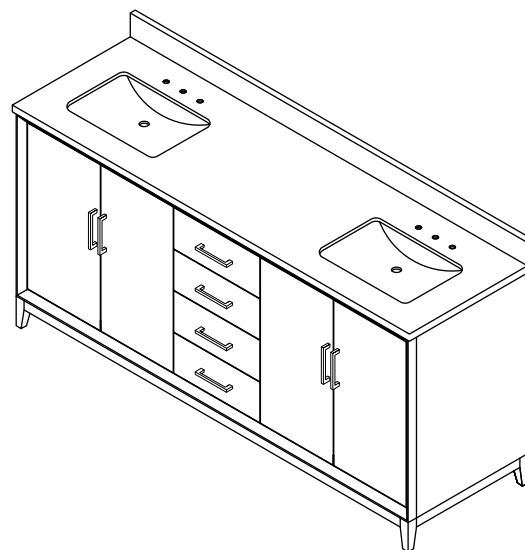


Technical drawing of a rectangular panel with dimensions and mounting hole specifications:

- Overall width: 60"
- Overall height: 22"
- Top edge dimensions: 13" (left), 34" (center), 13" (right)
- Left edge dimensions: 6" (top), 11-1/4" (bottom)
- Bottom edge dimension: 17" (left side)
- Right edge dimension: 3-1/4" (top)
- Mounting holes:
  - Three holes on the left side, spaced 4" apart.
  - One hole on the right side.
  - One hole in the center, labeled  $\varnothing 1-3/8"$ .
- Vertical dimension for the central hole: 9-3/4"



WC-7575-60-DBL  
Quartz