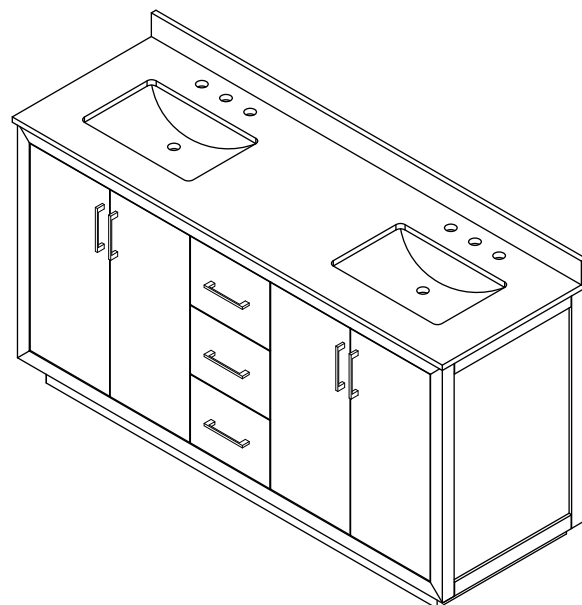
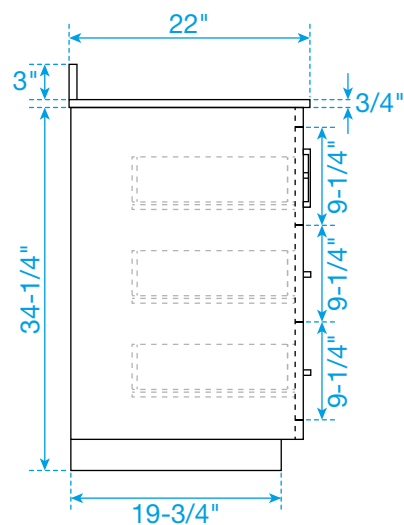


WC-4141-66-DBL-VCA3



Technical drawing of a three-panel sliding door system. The overall width is 65-1/4" and the overall height is 21-3/4". The three panels are separated by two vertical dividers. The dimensions for the panels and dividers are as follows:

- Overall width: 65-1/4"
- Overall height: 21-3/4"
- Panel width (each): 25-1/4"
- Divider width (each): 11-3/4"
- Panel height (each): 16-1/2"
- Divider height (each): 15-1/2"
- Inner panel width (each): 11"



*Note: Due to high probability of breakage, the backsplash comes in two pieces, cut from the same piece. All measurements are $\pm 1/4"$.