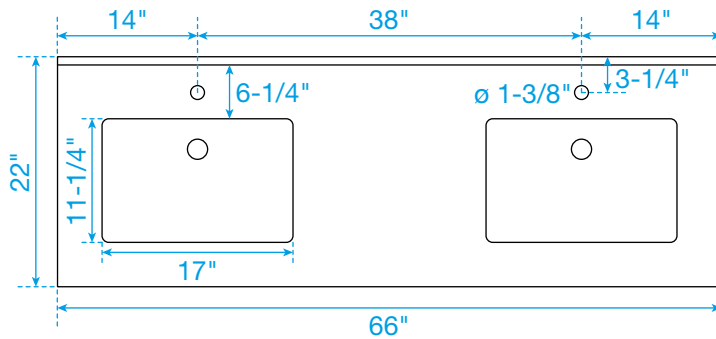
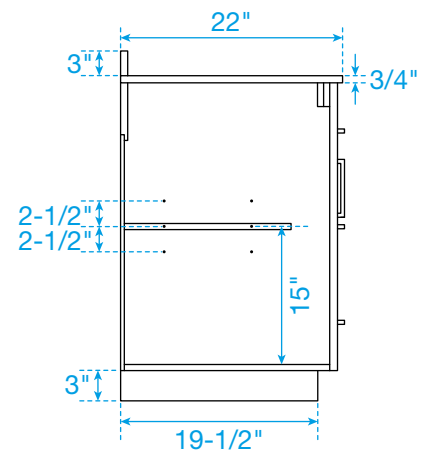
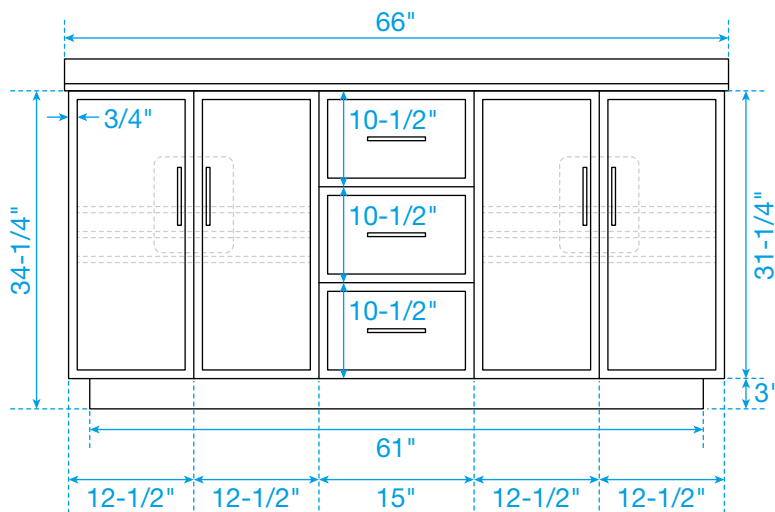
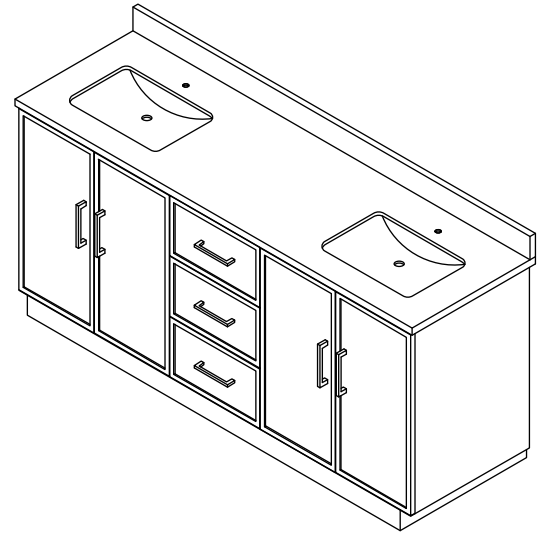
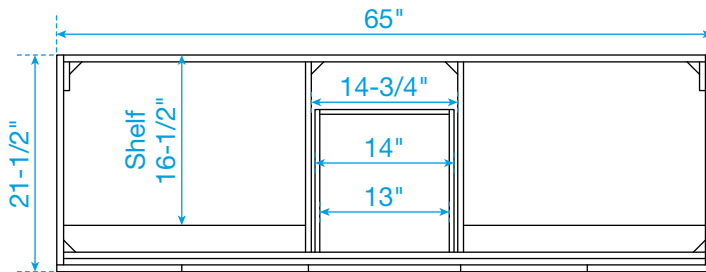


# WYNDHAM COLLECTION



TOP VIEW OF VANITY CABINET



\*Note: Due to high probability of breakage, the backsplash comes in two pieces, cut from the same piece. All measurements are  $\pm 1/4"$ .

WC-7474-66-DBL

Technical drawing of a double vanity unit, showing dimensions in inches.

**Top View:**

- Overall width: 66"
- Overall height: 22"
- Left sink width: 17"
- Left sink height: 11-1/4"
- Distance from left wall to left sink center: 14"
- Distance between sink centers: 31-1/4"
- Distance from right sink center to right wall: 14"
- Left sink hole diameter: Ø1.38"
- Left sink hole offset from center: 3-1/4"
- Right sink hole offset from center: 9"

**Side View (Left):**

- Top surface thickness: 3/4"
- Overall height: 22"
- Sink depth: 15"
- Sink height: 6-1/2"
- Top surface offset from sink: 3"

**Side View (Right):**

- Top surface thickness: 3/4"
- Overall height: 8"
- Sink depth: 19"
- Sink height: 3"
- Top surface offset from sink: 3"

**Front View:**

- Overall width: 21-1/4"
- Overall height: 3"

Note: Due to high probability of breakage, the backsplash comes in two pieces, cut from the same piece. All measurements are  $\pm 1/4"$ .

WC-VCA-66-DBL-TOP