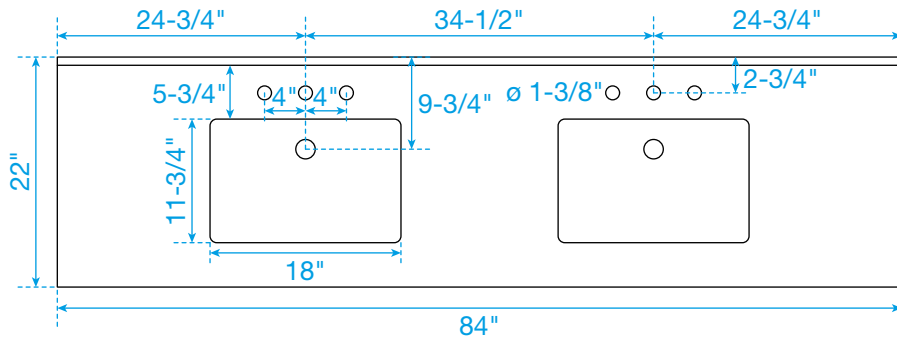
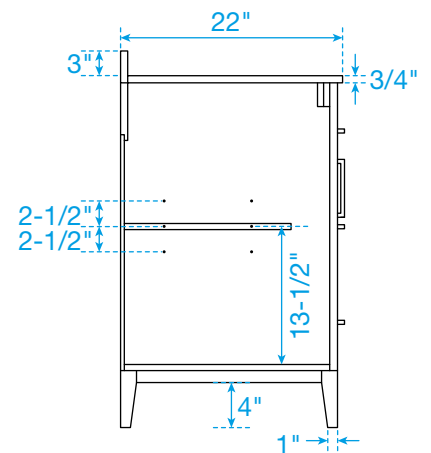
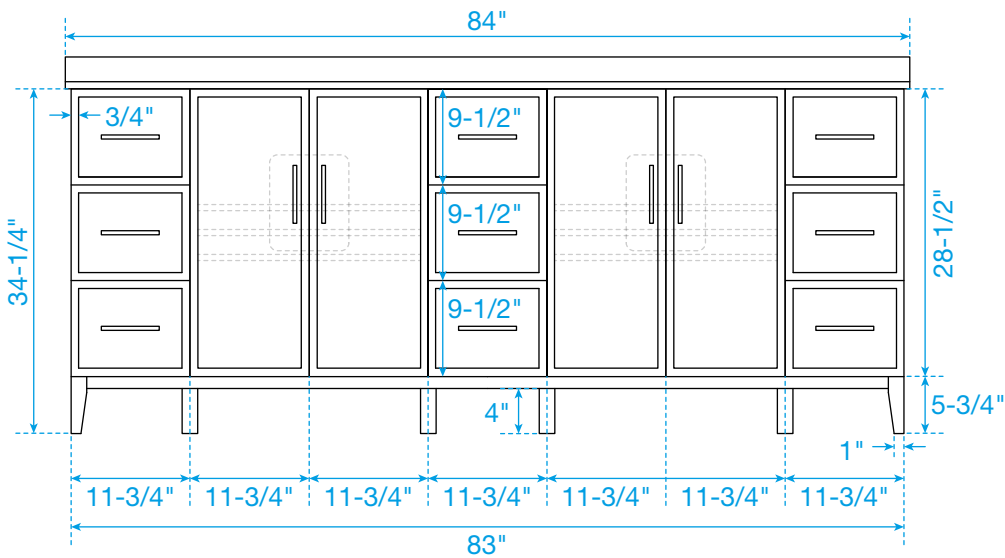
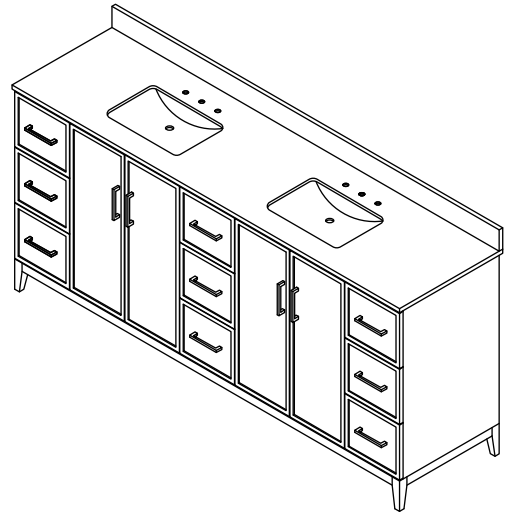
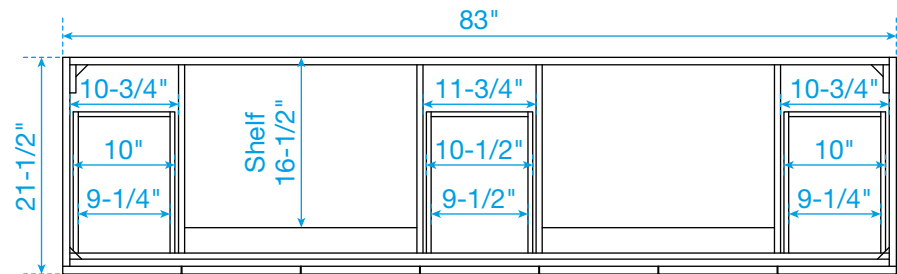


WYNDHAM COLLECTION



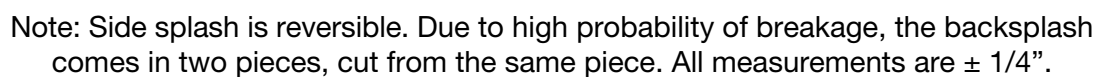
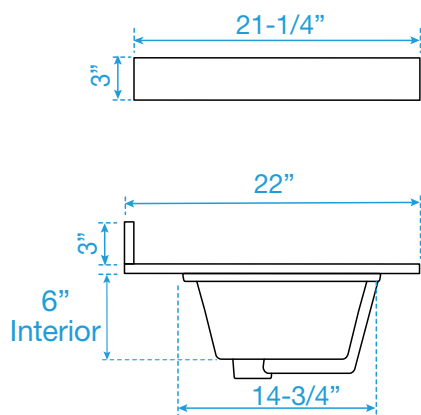
TOP VIEW OF VANITY CABINET



*Note: Due to high probability of breakage, the backsplash comes in two pieces, cut from the same piece. All measurements are $\pm 1/4"$.

WC-7171-84-DBL
Quartz

A technical line drawing of a rectangular sink unit, viewed from an isometric perspective. The unit consists of a long, narrow rectangular basin with two distinct rectangular sinks. Each sink has a central circular drain. Between the two sinks, there is a central control panel featuring three small, circular buttons or indicators arranged horizontally. The entire unit is framed by a thin, raised border.



WC-QC3-84-DBL-TOP