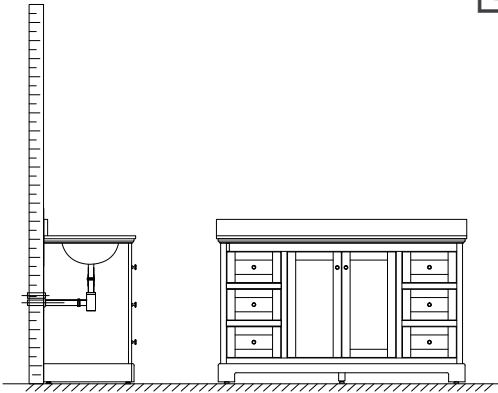


WYNDHAM COLLECTION

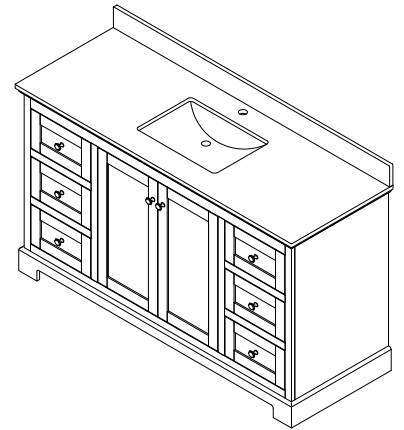


- Prior to installation please check received items against the "Packing List". Please report any missing items to your retailer immediately.

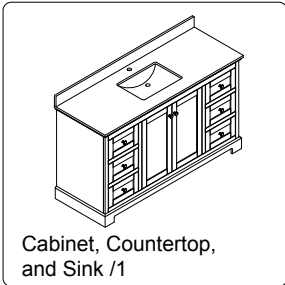
- Protect all surfaces from sharp objects, high heat sources, direct prolonged sunlight and chemical hazards.

- Professional installation recommended.

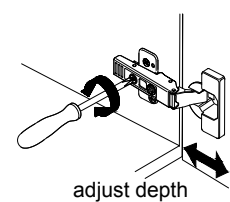
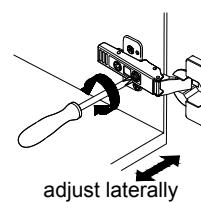
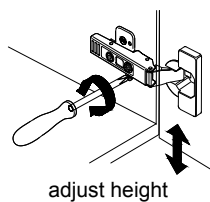
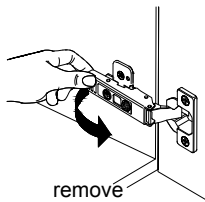
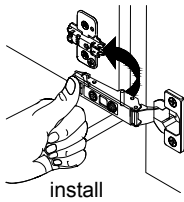
- Backsplash comes in two pieces.



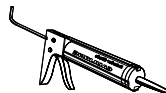
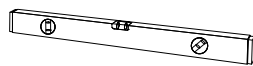
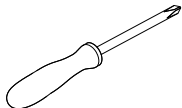
PACKING LIST (Not all components may be included, depending upon your purchase)



HOW TO ADJUST HINGES (if required)



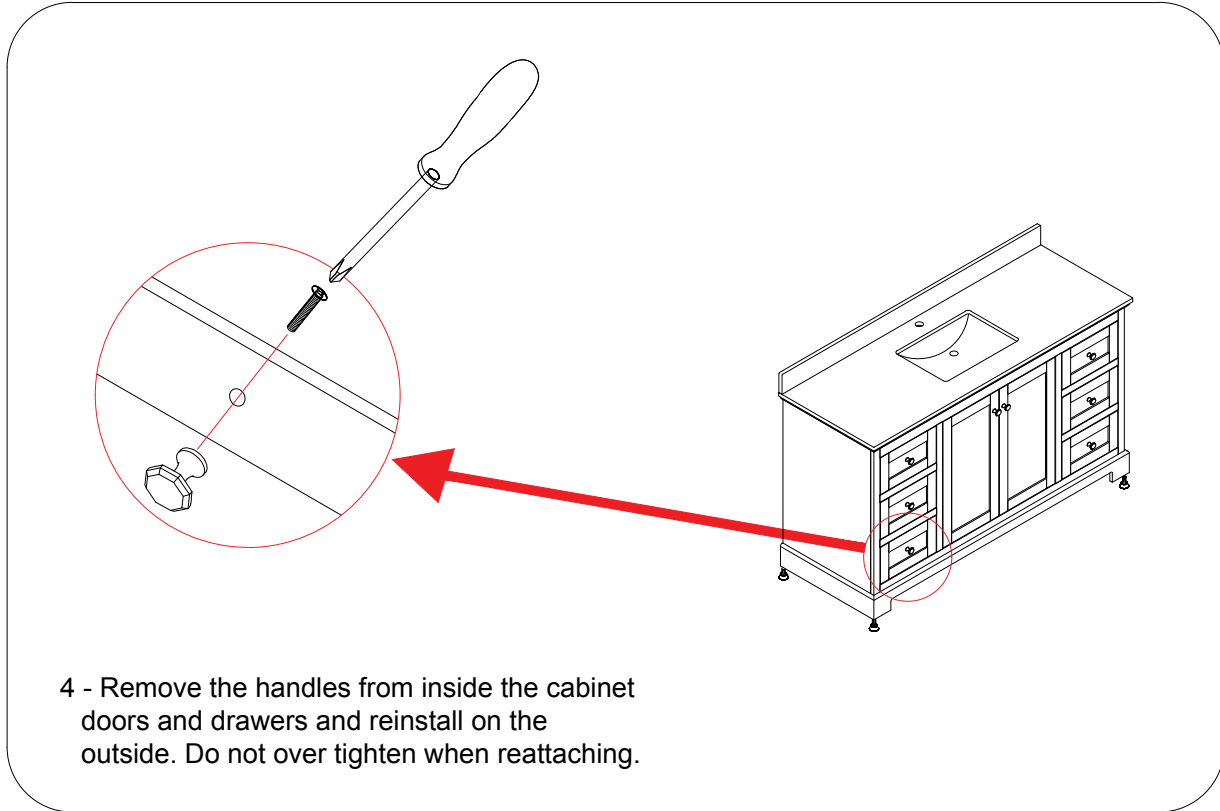
REQUIRED TOOLS NOT IN BOX



WC-4040-60-SGL Installation Guide

WYNDHAM COLLECTION

INSTALLATION INSTRUCTIONS



WC-4040-60-SGL
Installation Guide