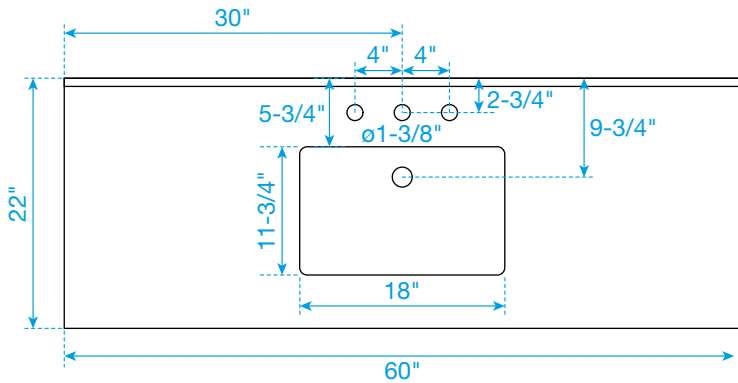
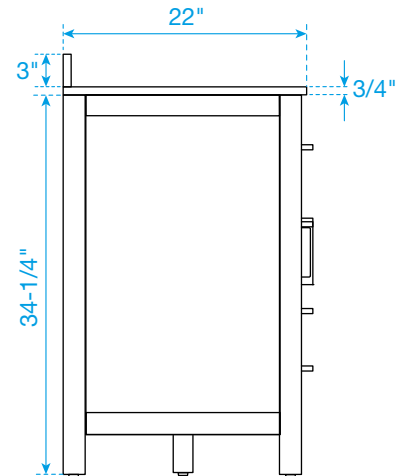
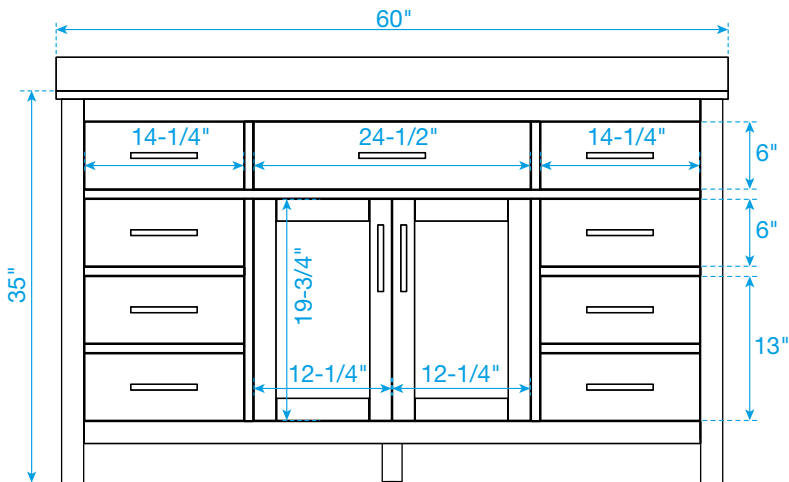
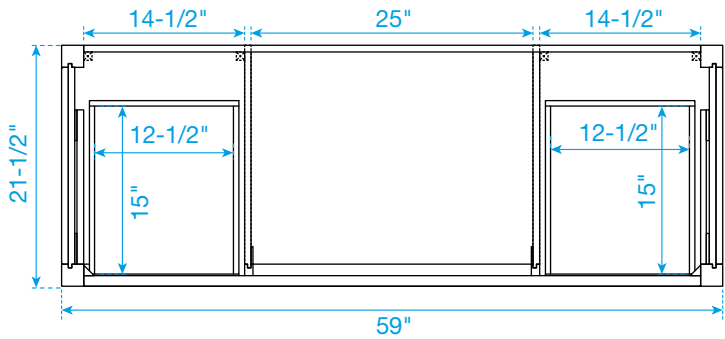
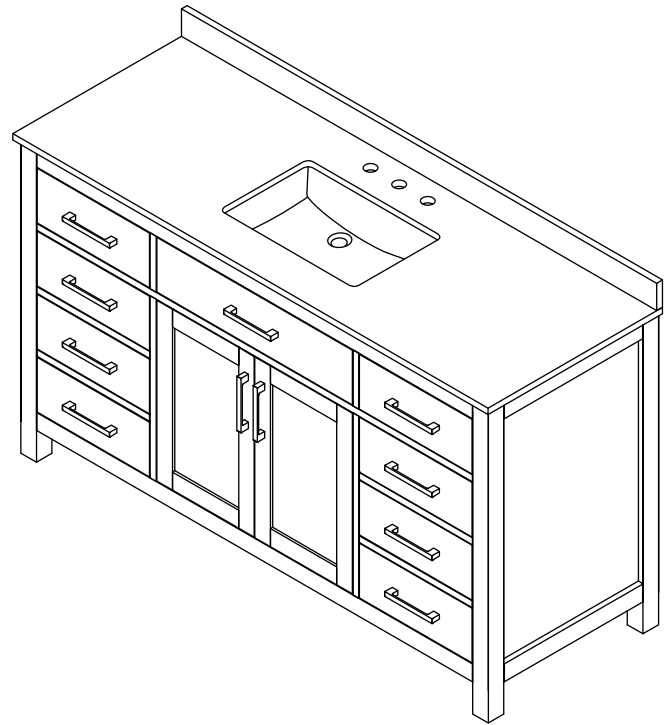


# WYNDHAM COLLECTION



TOP VIEW OF VANITY CABINET



\*Note: Due to high probability of breakage, the backsplash comes in two pieces, cut from the same piece. All measurements are  $\pm 1/4"$ .

WC-2424-60-SGL  
Quartz

Technical drawing of a rectangular kitchen island with a sink, showing top, side, and front views with dimensions.

**Top View Dimensions:**

- Overall width: 26"
- Overall length: 22"
- Sink width: 18"
- Sink length: 11-3/4"
- Distance from left edge to sink center: 21"
- Distance from right edge to sink center: 21"
- Distance from front edge to sink center: 19-1/2"
- Distance from back edge to sink center: 19-1/2"
- Sink cutout width: 14-3/4"
- Sink cutout depth: 6"
- Sink cutout height: 3"
- Sink cutout thickness: 3/4"
- Sink cutout radius: R1-3/8"
- Sink cutout hole diameter: Ø1-3/8"
- Sink cutout hole spacing: 4"
- Sink cutout hole diameter: 2-3/4"
- Sink cutout hole spacing: 4"
- Sink cutout hole diameter: 9-3/4"

**Side View Dimensions:**

- Overall width: 21-1/4"
- Overall length: 22"
- Sink width: 18"
- Sink length: 11-3/4"
- Distance from left edge to sink center: 21"
- Distance from right edge to sink center: 21"
- Distance from front edge to sink center: 19-1/2"
- Distance from back edge to sink center: 19-1/2"
- Sink cutout width: 14-3/4"
- Sink cutout depth: 6"
- Sink cutout height: 3"
- Sink cutout thickness: 3/4"
- Sink cutout radius: R1-3/8"
- Sink cutout hole diameter: Ø1-3/8"
- Sink cutout hole spacing: 4"
- Sink cutout hole diameter: 2-3/4"
- Sink cutout hole spacing: 4"
- Sink cutout hole diameter: 9-3/4"

**Front View Dimensions:**

- Overall width: 21-1/4"
- Overall length: 22"
- Sink width: 18"
- Sink length: 11-3/4"
- Distance from left edge to sink center: 21"
- Distance from right edge to sink center: 21"
- Distance from front edge to sink center: 19-1/2"
- Distance from back edge to sink center: 19-1/2"
- Sink cutout width: 14-3/4"
- Sink cutout depth: 6"
- Sink cutout height: 3"
- Sink cutout thickness: 3/4"
- Sink cutout radius: R1-3/8"
- Sink cutout hole diameter: Ø1-3/8"
- Sink cutout hole spacing: 4"
- Sink cutout hole diameter: 2-3/4"
- Sink cutout hole spacing: 4"
- Sink cutout hole diameter: 9-3/4"

WC-QC3-60-SGL-TOP